



## Golden Tee PGA TOUR Edition System Setup Menus & Collections Guide

### CONTENTS

Contents.....	1
System Setup Menus.....	3
Getting Started.....	3
Main Menu .....	3
Collections & Earnings Menu.....	4
Do Collection.....	4
General Settings .....	5
Operator Adjustables.....	6
General Adjustments.....	6
Money Slot Adjustments.....	7
Sound Adjustments .....	7
Collection Settings.....	8
Reset to Factory Settings .....	9
System Tests .....	10
Video Tests.....	10
Color Test .....	11
Contrast Test .....	11
Screen Size Adjustment .....	12
Sound Tests.....	12
Player Control Tests.....	13
Mechanical Meter Test .....	13
Hardware Tests.....	13
Hardware/Software.....	14
System Info.....	14
USB Info .....	14
Version Info.....	15
Check Hard Drive.....	15
Check Cooling.....	15
Check Card Reader.....	16
Troubleshooting Shortcuts.....	16
Golden Tee Settings & Audits.....	17
Golden Tee Settings.....	17
Golden Tee Audits.....	19
Player Cost Schedule .....	20
Fixed Player Costs .....	21
Reset Leaderboards & Records.....	22
ITNet Settings .....	22
Communication Settings.....	23
Configure Ethernet Settings.....	23
Configure Wi-Fi Settings.....	24
Collections Guide .....	25
Income Split Guide.....	26
Player Wallet Guide.....	27

Golden Tee PGA TOUR Edition Revenue Guide ..... 28

Accounting for the Various Revenue Types ..... 28

Golden Tee PGA TOUR Edition Fees..... 29

Accounting for Fees ..... 30

Collections ..... 30

GT PGA TOUR Edition Collection Procedure..... 32

Menu Navigation Shortcuts..... 35

# SYSTEM SETUP MENUS

## GETTING STARTED

### Navigating the Menu System

The System Setup menus cover a variety of important areas including collections, tests, game adjustments, and optional settings. You should familiarize yourself with these menus, as they are designed to optimize your game for your location and your business. Pay particular attention to the Collection menus, as they will detail how much money to give to your location, and how much money to set aside for ITNet®. There are also menus that allow you to adjust various split percentages for a variety of different charges. These screens can help you maximize your investment and involve your location in the costs associated with your equipment.

### Entering System Setup Mode

There are two ways to enter System Setup. Open the coin door and press the Test button to access the game's System Setup software menu system. Or, from the I/O Board, move the DIP switch SW202 position 4 to the ON position. This switch needs to be moved back to OFF to exit the System Setup menus. Refer to the diagram in Appendix D for all DIP switch settings.

### Selecting a Menu

A menu option can be selected at any time by rolling the trackball up or down or by pressing the Left or Right buttons.

### Choosing a Menu/Option

A menu option can be chosen at any time by pressing the Start button.

### Changing a Value

A value can be changed at any time by rolling the trackball left or right.

**Note:** Some features may not be allowed in certain state or local jurisdictions. Be sure to check your local laws before activating or allowing any features that may be questionable in your area.

## MAIN MENU

The Main Menu displays five main areas that make up System Setup mode. Please familiarize yourself with these areas, as they will help you maximize your earnings potential.

### Collections & Earnings – See Page 25

This section displays your machine's monetary activity and details the various areas for income and expenses. This section should be reviewed during every collection to make sure you manage your split correctly.

### General Settings – See Page 26

This area allows you to adjust operator settings, perform system tests, and reset your game back to factory settings.

### Troubleshooting Shortcuts – See Page 37

This section presents a variety of tests and menus that will help you troubleshoot any problems you may be having with your game. The available sections are also accessible through the other main sections.

### Golden Tee Settings & Audits – See Page 38

This area allows you to adjust settings specific to Golden Tee PGA TOUR Edition including the player cost schedule, game features, and game audits.

### ITNet Settings – See Page 43

This section details various ITNet settings, such as game registration and connection settings with ITNet.

### Exit

This will exit the System Setup menus and take you back into the game's attract mode.



## COLLECTIONS & EARNINGS MENU

This menu allows you to perform a collection or view various earnings and fees.

### Do Collection

This section is used when making a collection. The various screens will detail the cost breakdowns and show you how much of the cash box is to be paid to the location. Please take some time to familiarize yourself with this section. Using it wisely can save you money.

### Clear Unused Cash

Sometimes when making a collection there is money in the game that has not yet been played. Use this setting to clear the unused cash from the screen so your future collections will reconcile with game play.

### Add Free Cash

Use this setting to add money to the game for free plays that do not advance the hard meter.

### Back

This will take you back to the **Main Menu**.



## DO COLLECTION

This screen is the main collection screen. It is highly recommended that you view this screen with every collection and reset it when your collection is complete.

This screen displays the following helpful information:

### Collection Date Range

The displayed dates are from your last collection until today.

### Days in Operation

The number of days the machine was active and available for play since the last collection.

### Total Income

The total income your machine made for this time period.

### Total Fees

The total of the various fees that need to be set aside before making your split.

### Balance

The total income minus the total fees.

### Operator Portion of Balance

The amount of the collection that the operator keeps.

### Operator Owes Location

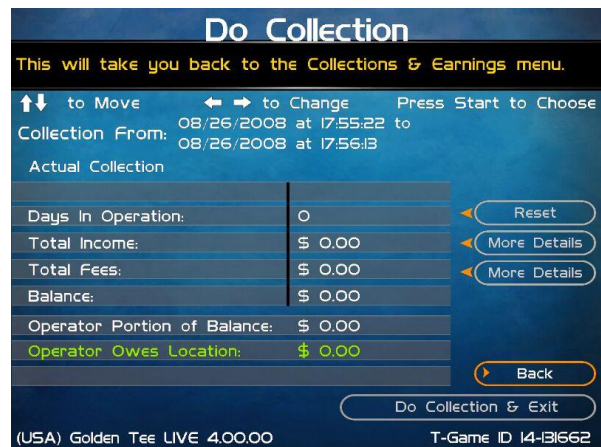
The amount of the collection that you pay your location.

### Back

If you do NOT wish to perform a collection and reset the audits, highlight Back to exit this screen and return to the **Collections & Earnings** menu.

### Do Collection and Exit

If you wish to perform a collection and reset the audits (recommended), highlight Do Collection and Exit and press Start. This will set all the fields in the Do Collection screen to zero. Be sure to empty your cash box at the same time, so these screens will match the money at your next collection. Make sure it is an 'Actual Collection' not an 'Estimated Collection'.



### Reset (Across from Days in Operation)

On the Do Collection menu page: Resets the number of days in field operation to zero.

### More Details (Across from Total Income)

On the Do Collection menu page: Displays a breakdown of Total Income, including income from Cash, Player Wallet, Credit Card purchases, and various promotional or Gift Cards.

From the Total Income menu select 'More Details' next to Cash to see Collection Income Details menu at right, which has a breakdown of total player amount and the Operator/Location portions.

	Operator Portion	Location Portion	Total
Cash:	\$ 914.83	\$ 609.88	\$ 1524.71
Player Wallet:	\$ 32.72	\$ 14.03	\$ 46.75
Credit Card:	\$ 0.00	\$ 0.00	\$ 0.00
Operator Money Card:	\$ 51.00	\$ 0.00	\$ 51.00
ITNET Money Card:	\$ 0.00	\$ 0.00	\$ 0.00
FREE CASH *	\$ 6.50	\$ 0.00	\$ 6.50
<b>TOTALS:</b>	<b>\$ 998.55</b>	<b>\$ 623.91</b>	<b>\$ 1622.46</b>

\*Not Included In Totals

Back

(USA) Golden Tee LIVE 1104.02 T-Game ID 14-000075

### More Details (Across from Total Fees)

On the Do collection menu page: Displays a breakdown of the various fees, including the ITNet fees, money for the Prize Fund, Communication fees, Credit Card fees, Software Update fees and Hardware Upgrade fees. Note: Software Update Fees and Hardware Upgrade Fees are included for your convenience, to help you cover the costs of owning and operating your equipment. These two line items are NOT included on your monthly ITNet statement.

	Total Fees:
ITNET Fees:	\$ 1361.51
Prize Fund:	\$ 592.32
Communication Fees:	\$ 45.90
Credit Card Fees:	\$ 3.60
Software Update:	\$ 368.00
Hardware Upgrade Fee:	\$ 0.00
Taxes:	\$ 0.00
<b>TOTAL FEES:</b>	<b>\$ 2371.33</b>

More Details

Back

(USA) Golden Tee PGA Tour 5005.00 T-Game ID 14-28238

## GENERAL SETTINGS

The General Settings menu houses various adjustable settings relating to the cabinet and is divided into two sections.

### Operator Adjustables

This area allows you to adjust options like volume, attract mode sounds, and money slot settings.

### System Tests

This area allows you to perform diagnostics including video adjustments, input tests, and sound tests.

### Back

This will take you back to the **Main Menu**.





## OPERATOR ADJUSTABLES

This menu contains adjustable settings that pertain to you and your business. Please familiarize yourself with this section, as it can help you maximize the game's earning potential.

### General Adjustments

This area allows you to adjust options like upper monitor settings and money modes.

### Money Slot Adjustments

This area allows you to adjust the settings of your various money slots on your cabinet.

### Sound Adjustments

This area allows you to adjust the various sound settings including attract mode sounds, game volume, and stereo setup.

### Collection Settings

This critical area allows you to adjust various fees and splits for your collections.

### Reset to Factory Settings

This option allows you to reset all the settings found in the Operator Adjustables section to factory defaults.

### Back

This will take you back to the **General Settings** menu.



## GENERAL ADJUSTMENTS

### Coin Message

The default is set to Insert \$.

### Accept Credit Card

This Yes/No choice lets you decide to allow game purchases with credit cards. **The default is set to Yes.**

### Game Mode

This lets you toggle between Money/Free Play. **The default is set to Money Play.**

### Advertisements

Golden Tee PGA TOUR Edition 2021 can display advertisements when available. Advertisements typically involve alcohol or are directed at a mature audience. This option can be turned off in venues where minors may be present.

### Reset Values

This option allows you to reset the settings found in the General Adjustments menu to their factory defaults.

### Back

This will take you back to the Operator Adjustables menu.



## MONEY SLOT ADJUSTMENTS

### Money Slot 1

This adjusts how much one pulse equals for Money Slot 1. **The default is set to \$0.25.**

### Money Slot 2

This adjusts how much one pulse equals for Money Slot 2. **The default is set to \$0.25.**

### Money Slot 3

This adjusts how much one pulse equals for Money Slot 3. **The default is set to \$0.25.**

### Credit Card

See the General Adjustments screen.

### Reset Values

This resets all values to their default value located on this page.

### No

This will not perform the reset and take you back to the previous menu.

### Yes

This will perform the reset and take you back to the previous menu.

### Back

This will take you back to the Operator Adjustables menu.



## SOUND ADJUSTMENTS

### In Game Volume

This option lets you adjust the In Game volume from OFF to 100%. **The default is set to 30%.**

### Attract Volume

This option lets you adjust the Attract Mode volume from OFF to 100%. **The default is set to 30%.**

### Attract Mode Sounds

This adjusts how often sounds are played in Attract Mode: Never, Rarely, Sometimes, Often and Always. **The default is set to On – Sometimes.**

### Stereo/Mono

This option is where you select stereo or mono setup. **The default is set to Stereo.**

### Reset Values

This resets all values to their default value located on this page.

### Back

This will take you back to the **Operator Adjustables** menu.



## COLLECTION SETTINGS

Golden Tee PGA TOUR Edition allows you to adjust costs and percentages for the various income types that are received. Use this menu to determine how much you want your location to help you pay for these charges and services.

### Set Hardware Update Fee

This menu allows you to adjust the Hardware Update Fee. This fee is included for your convenience, as a method to have the location pay for part of your equipment. The default value for 2021 machines is \$0.00 per week. Adjust this value to an appropriate amount for your location.



**Note: Hardware Update Fees are included for your convenience, and are NOT included on your monthly ITNet statement.**

### Operator/Location Income Splits

Use this menu to fine-tune your splits for any generated income. Since there may be times when you have to pay the location before you actually have the cash in hand, you may want to adjust the split in your favor to cover the waiting period. The default settings are displayed on the accompanying screen.

The adjustable settings refer to income generated from:

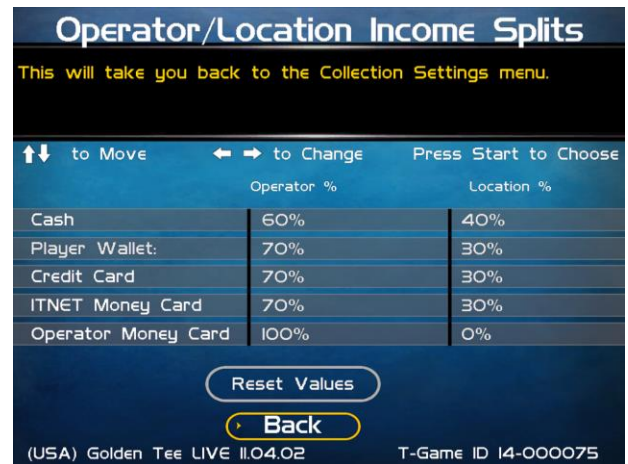
Cash

Player Wallet

Credit Card

ITNet Money Card

Operator Money Card



### Operator/Location Fee Splits

Use this menu to determine how you wish to split the various fees with your location. For example, since there is a fee associated with credit card usage, you may want to adjust the split in your favor to help cover the costs of the transaction fees.

ITNet Fees

Prize Fund Fees

Credit Card Fees

Communication Fees

Software Update Fees

Hardware Update Fees



**Note: Software Update Fees and Hardware Update Fees are included for your convenience, and are NOT included on your monthly ITNet statement.**



## Tax Settings

Many states require special taxes or license fees that affect your bottom line. Use this menu to separate these costs from your collection before making your normal split.

### Set Tax Rate

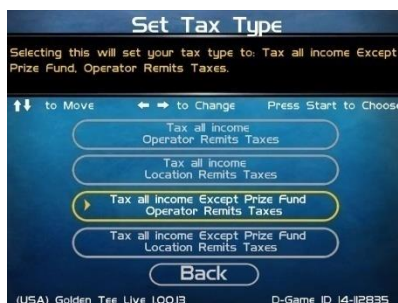
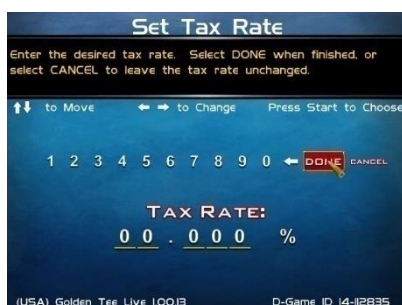
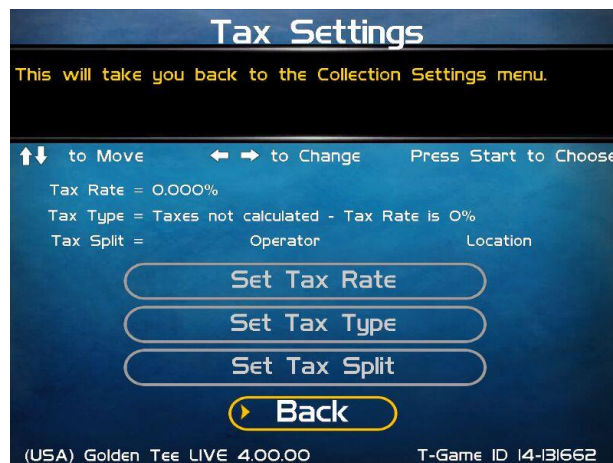
This menu allows you to adjust your current tax rate percentage.

### Set Tax Type

This menu helps you determine what part of the collection is taxed, and who pays for these taxes.

### Set Tax Split

This menu allows you to split the tax fees with the location.



## Reset to Defaults

This menu will set all of the collection settings to their factory default values. A verification screen will display to make sure you agree to the change.

### Back

This will take you back to the **Operator Adjustables** menu.

## RESET TO FACTORY SETTINGS

This menu will reset ALL settings in the Operator Adjustables section to their default values. A verification screen will display to make sure you agree to the change.

**Note:** This process may take several minutes to complete.



## SYSTEM TESTS

This area allows you to perform diagnostics including video adjustments, input tests, and sound tests.

### Video Tests

This area has tests that will help you to adjust your game's color, contrast, and screen size.

### Sound Tests

This area has tests that will help you adjust your game's audio setup by playing a stored sound, a streaming sound, and testing the speaker(s).

### Player Control Tests

This option allows you to test all inputs including trackball, buttons, and money slots.

### Mechanical Meter Test

This test makes the hard meter adjust by one to make sure it is functioning properly.

### Hardware Tests

This area includes a series of diagnostic screens and tests to help you make sure your game is functioning correctly.

### Back

This will take you back to the **General Settings** menu.



## VIDEO TESTS

The Video Tests section has a variety of tests that will help you adjust your monitor.

### Color Test

This area will take you to a series of tests to adjust your monitor's RGB settings to have each color display properly.

### Contrast Test

This area will take you to a series of tests to adjust your monitor's brightness/contrast so the game displays properly.

### Screen Size Adjustments

Use this screen to align your monitor so that all the circles appear as circles and the boundary line appears on the edge of each side of the screen.

### Back

This will take you back to the **System Tests** menu.



## COLOR TEST

### Color Grid Adjustment

Adjust your monitor to have each colored box display properly.

### Red Screen

Adjust your monitor to have red display properly.

### Green Screen

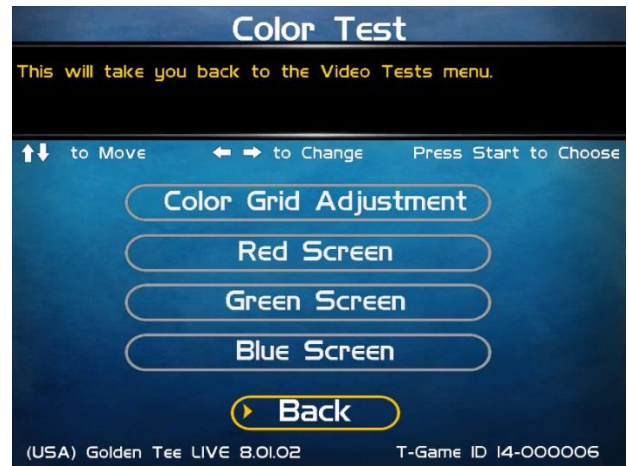
Adjust your monitor to have green display properly.

### Blue Screen

Adjust your monitor to have blue display properly.

### Back

This will take you back to the **Video Tests** menu.



## CONTRAST TEST

### White Screen

Adjust your monitor to have white display properly.

### 50% White Screen

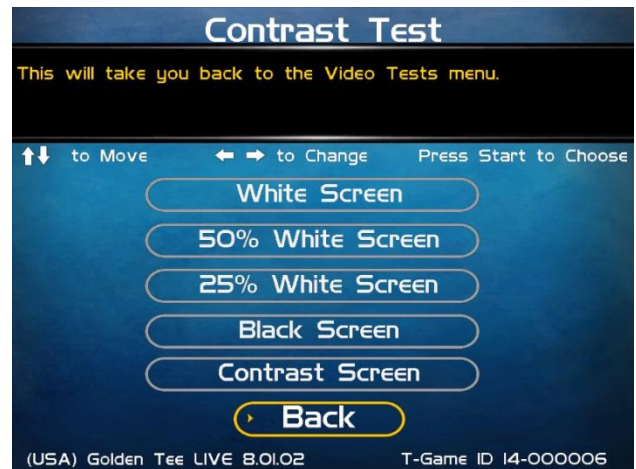
Adjust your monitor to have 50% white display properly.

### 25% White Screen

Adjust your monitor to have 25% white display properly.

### Black Screen

Adjust your monitor to have black display properly.



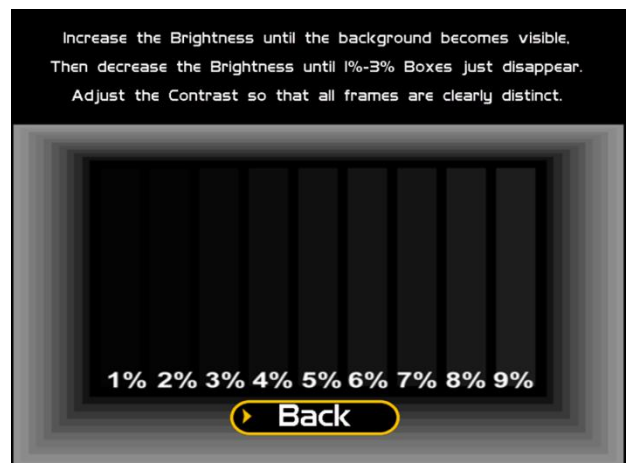
**Note:** May not work on older or often used monitors. If you have a monitor that's old or has been used often you may not be able to adjust the contrast and/or brightness levels accordingly. In this case adjust the monitor for best performance while getting close to the recommended settings.

### Contrast Screen

This option is a test you can use to adjust your monitor's contrast and brightness settings to have the boxes displayed properly.

### Back

This will take you back to the **Video Tests** menu.

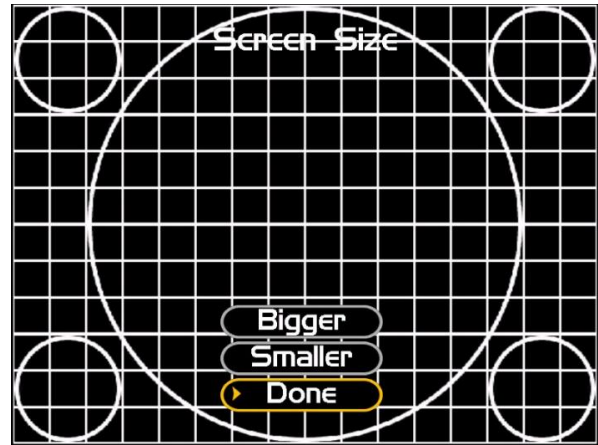


## SCREEN SIZE ADJUSTMENT

Use this screen to adjust the size and aspect ratio of your picture. Press the Start button to exit.

If you are using an HDTV display, you may need to adjust this screen to see the complete image. Use the trackball to highlight BIGGER or SMALLER and press the Start button to adjust the screen image. Press DONE to exit.

*Note: Adjusting the screen size will prompt a reboot upon exiting this menu.*



## SOUND TESTS

### Stored Sound

This will play a stored sound so you can make sure your audio setup is functioning properly.

### Streaming Sound

This will play a streaming sound so you can make sure your audio setup is functioning properly.

### Speaker Test

This test will say MONO if you have your game set to Mono or LEFT and RIGHT if you have it set to stereo so you can make sure your audio setup is functioning properly.

### Back

This will take you back to the **System Tests** menu.



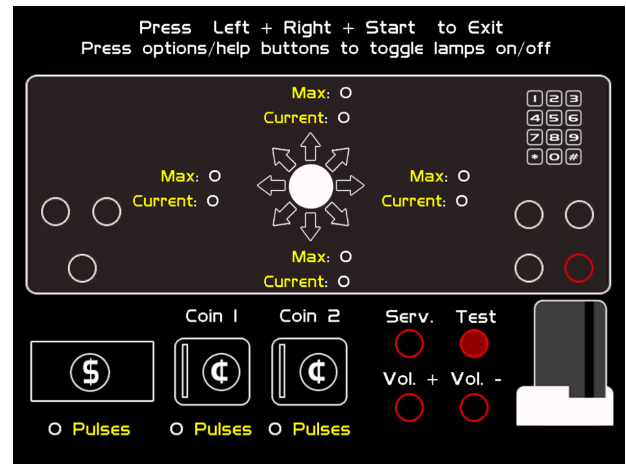


## PLAYER CONTROL TESTS

Use this screen to test all of the inputs, including the trackball, buttons, money slots and card reader. When an input is active the appropriate graphic image will light. Press the Left, Right and Start buttons simultaneously to exit this test screen.

When testing the trackball, the Current value will change depending on the direction the ball is spinning. The Max value will display the largest number reached during the test. There is no exact number to determine whether a trackball is malfunctioning, but in general the Max number should be close to the same when spinning up and down, and close to the same when spinning left and right.

When testing coin and bill acceptor switches, the number of pulses will appear below the appropriate image. On the keypad the numbers illuminate when pressed.



## MECHANICAL METER TEST

### Click Meter

This test makes the hard meter adjust by one to make sure it is functioning properly. You should hear a clicking sound.

### Back

This will take you back to the **System Tests** menu.



## HARDWARE TESTS

This area includes a series of diagnostic screens and tests to help you make sure your game is functioning correctly.

### Hardware/Software

This area has options to view your System, USB, and Version info.

### Check Hard Drive

This test checks the integrity of your hard drive's data.

**Note: This test can take several minutes.**

### Check Cooling

This test helps you make sure your game is functioning at the proper temperature and all fans are working.

### Check Card Reader

This tests the functionality of the card reader and displays some details about the card tested.

### Back

This will take you back to the **System Tests** menu.



## HARDWARE/SOFTWARE

### System Info

This is a list of your game's current basic system information.

### USB Info

This is a list of your game's current USB devices.

### Version Info

This is a list of your game's software and firmware versions.

### Back

This will take you back to the **Hardware Tests** menu.

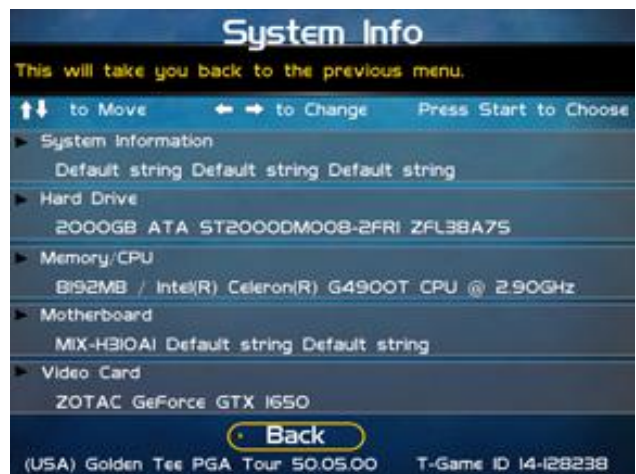


## SYSTEM INFO

This is a list of your game's current basic system information, including Hard Drive, CPU and Video Card.

### Back

The Back button takes you back to the **Hardware/Software** menu.



## USB INFO

This is a list of your game's current USB devices.

### Back

The Back button takes you back to the **Hardware/Software** menu.



## VERSION INFO

This is a list of your machine's software and firmware versions.

### Back

The Back button takes you back to the **Hardware/Software** menu.



## CHECK HARD DRIVE

### Check File Data

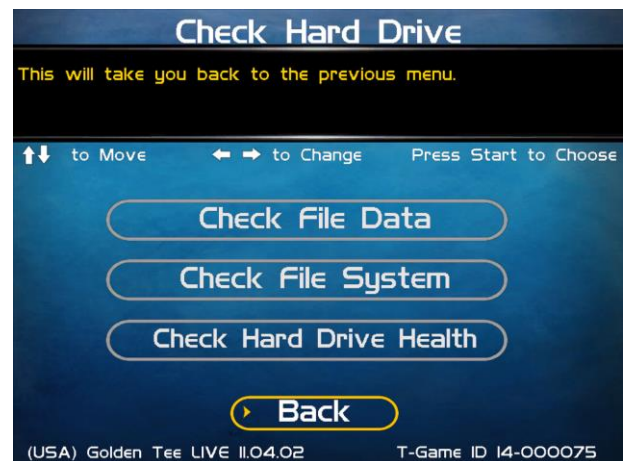
This test checks the integrity of your hard drive's data.

Select **Begin Test** to initiate the process.

**Note: This test can take up to 3 hours to complete.**

If this test succeeds you will see the message: **Status: Hard Drive Functioning Properly**. If this test fails, you will see the message: **Hard Drive Error (#)**

Select **Back** to skip the test and return to the **Check Hard Drive** menu.



### Check File System

This test REBOOTS YOUR GAME and performs a low level systems check of the integrity of your hard drive.

**Note: This can take several minutes.**

### Check Hard Drive Health

This runs a test on your hard drive to determine its overall condition

### Back

This will take you back to the **Hardware Tests** menu.

## CHECK COOLING

This checks that your game is functioning at the proper temperature and all fans are working. The current status is color-coded for easy viewing. If the results are displayed in green, your cabinet is at normal settings.

**Note: Not all hardware configurations have identical cooling information available.**

### Back

The Back button takes you back to the **Hardware Tests** menu.





## CHECK CARD READER

This test will check to see if your card reader can read and recognize properly encoded IT and credit cards.

From this screen, insert a card into the card reader. If the card can be read, a message will appear on the screen.

### Back

The Back button takes you back to the **Hardware Tests** menu.



## TROUBLESHOOTING SHORTCUTS

This section gathers many of the commonly used tests and menus into one convenient area. Check here first when troubleshooting problems or questions about the integrity of your machine.

The tests that are available in this section are:

**Check Card Reader**

**Check Cooling**

**Check Hard Drive**

**Screen Size Adjustments**

**Communications Settings**

**Player Control Tests**

**System Tests**

Descriptions of each of these tests and sections can be found elsewhere in this manual.

### Back

This will take you back to the **Main Menu**.





# GOLDEN TEE SETTINGS & AUDITS

## Golden Tee Settings

This section allows you to make custom adjustments to certain features on your machine, including Prize Play, Closest to the Pin, and Hole-N-Win.

## Golden Tee Audits

This area allows you to view your money and game purchase audits, as well as reset and clear audits.

## Player Cost Schedule

This option allows you to adjust the amount of money it costs a player to play various game types.

## Reset Leaderboards & Records

This area allows you to clear any or all local Leaderboards and high score screens.

**Note:** This process may take several minutes to complete.

## Back

This will take you back to the **Main Menu**.



# GOLDEN TEE SETTINGS

## PGA TOUR Edition Prizes

Turn the ability to play for prizes ON or OFF. There are 18 holes and 50 players per contest.

## Delay of Game Timeout

Adjust the timer that senses activity between shots. The Current Value displays the number of seconds between a player's last shot and when the games will timeout the shot and apply a penalty stroke.

## Closest to the Pin PGA TOUR Edition

Closest to the Pin PGA TOUR Edition allows players to compete to win a cash prize. There are 9 holes and 35 players per contest. Each player gets one shot per hole and the total closest to the pin distance across all holes determines the winners.

## Player Invitational

Enable the ability to play a Player Invitational game. Players can set up private contests between friends on the GT Caddy mobile app, and then pay for and play their rounds on your machine.

## Hole-N-Win

Activate the ability for the game to offer special Hole-N-Win opportunities on some holes where allowed. Check your local regulations to determine if this feature is allowed in your area.

## Money Shot

Activate the ability for the game to offer the daily Money Shot contest, which allows players to take 3 shots at the same hole with variable wind conditions on each shot. Closest to the pin wins.

## More

Selecting More brings you to a second page of Golden Tee settings.



### Locked Conditions

Activate the ability for the game to allow for special contests where course conditions are the same for each player. This is generally used during PGA TOUR Edition events and promotions and requires a special activation card. Contact your IT representative for more information.

### Daily Prize Contest

Golden Tee PGA TOUR Edition 2021 offers a Daily Prize Contest, which allows an unlimited number of competitors the chance to compete against other players across the country for the best score on one predetermined course. Players can play as many times as they want and enter only their best score. To disable this feature select *Off*.

### Events Mode

Activate the ability for the game to allow for pre-determined course conditions with variables such as wind speed and pin placement.

### Casual Difficulty

Golden Tee PGA TOUR Edition 2021 offers players the opportunity to play offline in Casual mode.

Casual play is meant for beginners on a local, single machine only. You can set the difficulty of the courses in casual play to adapt the game to the needs of your specific location. Difficulty settings can be adjusted from 1 (easiest) to 5 (hardest). The default setting is 2. Casual mode still allows players to choose clothing items.

### Pre-game Casual Clothing

This setting allows a random selection of 30 clothing items (including 2021 clothing but not promotional items) available as a quick selection in Casual format. There are 10 random item types of shirts, pants and hats.

### Mulligans

Mulligans allow casual game players to retake a bad shot during their game. To disable this feature select *Off*. Note that mulligans are only available during Casual play.

### Real Time Rival Casual

This allows Real Time Rivals mode, where players play against computer-driven AI golfers.

### Real Time Rival Online

This allows Real Time Rivals Online Single and Ladder modes, where players play against computer-driven AI golfers using their registered golfer and equipment.

### Operator CTPP

This allows operators to run Closest to the Pin mode on a machine for a designated time.

### Reset Values

This resets all Golden Tee Settings to their factory defaults.

### Back

This takes you back to the **Golden Tee Settings & Audits** page.



## GOLDEN TEE AUDITS

This section displays various counts and totals for a variety of areas of interest. The following values are based on the last reset, the date of which is shown at the top of the screen.

### Total Number of 18-Hole Games

### Number of 18-Hole Games with Prizes

### Number of Daily Prize Games

### Number of Casual 1-hole purchases

### Number of Money Shot games

### Number of Money Shot 6x purchases

### Coin Slot 1

### Coin Slot 2

### Bill Acceptor

### Lifetime Money In

This field shows how much total money your machine has made since its initial registration with ITNet. This field is cumulative and is not affected by resetting the audits on this screen.

### More

Selecting More brings you to a second page of audit information.

### 18-Hole Unregistered Contest Games

### Number of 18-Hole Stats Play

### Number of Casual CTPP Games

### Number of Real Time Rival Casual Games

### Number of Real Time Rival Online Games

### Number of Events Mode Games

### Gold Cards purchased

### Hole-N-Win Par 3 Plays

### Hole-N-Win Par 4 Plays

### More

Selecting More brings you to a third page of audit information.

### Boxes of Balls Purchased

### Sets of Clubs Purchased

### Mulligans Purchased

### YouTube shots Purchased

### CTTP PGA TOUR Edition Plays

### Number of Online CTPP games

### Number of Invitational games

### Bags of 10 Golden Tees Purchased

### Bags of 25 Golden Tees Purchased

### Bags of 60 Golden Tees Purchased

### More

Selecting More brings you to the final page of audit information.

### Reset Audits

This will reset all audits to zero and update the date of the last audit reset. The Lifetime Money In field will not be affected by this function.

### Back

Select this to return to the **Golden Tee Settings & Audits** menu.

This selection will take you back to the previous menu.	
↑↓ to Move	← → to Change Press Start to Choose
Audits were last reset on at 1800:00	
Number of LIVE 18-hole games	659
Number of 18-hole games with prizes	48
Number of Daily Prize games	97
Number of casual 4-hole purchases	10797
Number of Money Shot games	264
Number of Money Shot 6x purchases	37
Coin Slot 1	\$ 6603.50
Coin Slot 2	\$ 0.00
Bill Acceptor	\$ 102.50
Lifetime Money In	\$ 6706.00
More	
Reset Audits	
Back	
(USA) Golden Tee PGA Tour 50.05.00 T-Game ID 14-128238	

This selection will take you back to the previous menu.	
↑↓ to Move	← → to Change Press Start to Choose
Audits were last reset on at 1800:00	
18-hole unregistered contest games	3
Number of 18-hole stats play	401
Number of Casual CTPP games	157
Number of Events Mode games	26
Hole-N-Win par 3 plays	18
Hole-N-Win par 4 plays	22
Boxes of balls purchased	12
Sets of clubs purchased	30
YouTube shots purchased	22
CTPP LIVE plays	141
More	
Reset Audits	
Back	
(USA) Golden Tee PGA Tour 50.05.00 T-Game ID 14-128238	

This selection will take you back to the previous menu.	
↑↓ to Move	← → to Change Press Start to Choose
Audits were last reset on at 1800:00	
Number of Invitational games	0
Bags of 25 Golden Tees purchased	36
Bags of 60 Golden Tees purchased	2
Club Passes purchased	3
Play Again Accepts	162
Play Again Declines	222
Reset Audits	
Back	
(USA) Golden Tee PGA Tour 50.05.00 T-Game ID 14-128238	



The final audits page has a breakdown of the number players who accepted or declined to play again.

**Play Again Accepts**  
**Play Again Declines**



## PLAYER COST SCHEDULE

This screen details the costs of various play selections. The player cost is shown as a total, with the Operator Portion and the ITNet portion broken out.

The options below allow you to adjust how much it costs a player to play the various options:

### 18 Holes PGA TOUR Edition

This is for 18-hole contest play. **The USA default is \$4.00. International defaults may vary.**

### CTTP PGA TOUR Edition/Online

This is for Closest to the Pin PGA TOUR Edition contest play. **The USA default is \$2.00 for PGA TOUR Edition play, but \$1.00 is always allocated to the Prize Pool. Online play is \$1.00.**

### Stats Play (18 Holes)

This option has all the 18-hole options as PGA TOUR Edition play, except without PGA TOUR Edition leaderboards. Players can save their statistics, view stats on goldentee.com, customize their golfer and use premium balls and clubs. **The USA default is \$4.00.**

### Casual (1 Hole)

This adjusts for 1-hole game in Casual Play Mode. **The USA default is \$0.25.**

### Casual (18 Holes)

This adjusts for 18-hole game in Casual Play Mode. **The USA default is \$4.00.**

### Mulligans

This adjusts the cost of a Mulligan repeat shot in Casual Play Mode. **The USA default is set to \$0.25.**

### Daily Contest

This adjusts the cost for an unlimited number of players to compete against other online players on a per day, per course basis. Only the player's best score is uploaded for a chance at the Daily Prize. **The USA default is \$5.00.**

### Closest to the Pin Casual

This adjusts the cost for this Casual Mode option that allows one to four players to compete in a 9-hole round of one shot golf. The winner is determined by the lowest total distance. **The USA default is \$1.00 for 9 holes.**

### Money Shot

This adjusts the cost for a player to enter their best shot of the day in a daily contest against an unlimited number of online players. **The USA default is \$1.00 for 3 shots.**

### Money Shot 6 Play

This adjusts the cost for a player to enter their best shot of the day in a daily contest against an unlimited number of online players. **The USA default is \$5.00 for 18 shots.**

Adjustable Costs	Operator Portion	ITNET Portion	Total To Player	Default Value
18 Holes LIVE	\$ 3.65	\$ 0.35	\$ 4.00	\$ 4.00
CTTP LIVE	\$ 0.90	\$ 0.10	\$ 1.00	\$ 1.00
Online (18 holes)	\$ 3.65	\$ 0.35	\$ 4.00	\$ 4.00
Casual (4 holes)	\$ 0.92	\$ 0.08	\$ 1.00	\$ 1.00
Casual (18 holes)	\$ 3.65	\$ 0.35	\$ 4.00	\$ 4.00
Mulligans	\$ 0.25	\$ 0.00	\$ 0.25	\$ 0.25
Daily Contest	\$ 3.65	\$ 0.35	\$ 5.00*	\$ 5.00*
CTTP Casual	\$ 0.90	\$ 0.10	\$ 1.00	\$ 1.00
Money Shot	\$ 0.40	\$ 0.10	\$ 1.00*	\$ 1.00*
Money Shot 6-Play	\$ 2.00	\$ 0.50	\$ 5.00*	\$ 5.00*



## Real Time Rivals Casual

This allows players to enter a contest against various computer AI opponents. **The USA default is \$4.00 for 18 holes.**

## Events Mode

This allows players to activate the ability for the game to allow for pre-determined course conditions with variables such as wind speed and pin placement. **The USA default is \$5.00 for 18 holes.**

## RTR Online

This allows players to enter a contest against various online computer AI opponents. **The USA default is \$4.00 for 18 holes.**

## View Fixed Costs

Selecting View Fixed Costs displays payment settings and splits for some items that are not adjustable.

## Reset Defaults

This resets all values to their default value located on this page.

Adjustable Costs	Operator Portion	ITNET Portion	Total To Player	Default Value
RTR Casual	\$ 3.65	\$ 0.35	\$ 4.00	\$ 4.00
RTR Online	\$ 3.65	\$ 0.35	\$ 4.00	\$ 4.00
Events Mode				
- 18 Hole Events	\$ 3.65	\$ 0.35	\$ 5.00*	\$ 5.00*
- 9 Hole Events	\$ 2.65	\$ 0.35	\$ 4.00*	\$ 4.00*
- MS Events				
- 18 Hole	\$ 3.65	\$ 0.35	\$ 5.00*	\$ 5.00*
- 9 Hole	\$ 1.82	\$ 0.18	\$ 3.00*	\$ 3.00*

View Fixed Costs  
Back

(USA) Golden Tee PGA Tour 50.05.00 T-Game ID 14-28238

## FIXED PLAYER COSTS

This screen details the splits between operator and ITNet from the player.

## Play 18/Daily Contest

Displays the additional cost for a player to play for Prizes 18/Daily Contest. **The USA cost is \$1.00.**

## Golf Club Sets

Displays the cost for a player to purchase golf clubs in Stats and PGA TOUR Edition Play. **The USA cost is \$2.00.**

## Dozen Golf Balls

Displays the cost for a dozen golf balls in Stats and PGA TOUR Edition Play. **The USA cost is \$0.50**

## Hole-N-Win Par 3

Displays the cost for a player to play a par 3 Hole-N-Win. **The USA cost is set to \$0.50.**

## Hole-N-Win Par 4

Displays the cost for a player to play a par 4 Hole-N-Win. **The USA cost is set to \$1.00.**

## Closest to the Pin LIVE

Displays the additional cost for a player to play Closest to the Pin PGA TOUR Edition. **The USA cost is \$1.00.**

## Bag of 10/25/60 Golden Tees

Displays the cost for the players to purchase Golden Tees in Stats and PGA TOUR Edition Play. **The USA cost is \$0.50/\$1.00/\$2.00.**

## Paid YouTube™ Shot

Displays the cost for the players to purchase the posting of their favorite shot to YouTube™. **The USA cost is \$0.50.**

## Money Shot

Displays the cost for a player to play for a Money Shot. **The USA cost is \$0.50.**

## Money Shot 6 Play

Displays the cost for a player to play for a Money Shot. **The USA cost is \$1.50.**

Fixed Costs	Operator Portion	ITNET Portion	Cost To Player
Prizes 18*/Daily	\$ 0.00	\$ 1.00	\$ 1.00
Golf Club Sets	\$ 1.50	\$ 1.50	\$ 3.00
Dozen Golf Balls	\$ 0.50	\$ 0.50	\$ 1.00
Hole-N-Win Par 3	\$ 0.00	\$ 0.50	\$ 0.50
Hole-N-Win Par 4	\$ 0.00	\$ 1.00	\$ 1.00
Closest to the Pin LIVE*	\$ 0.00	\$ 1.00	\$ 1.00
Bag of 10 Golden Tees	\$ 0.25	\$ 0.25	\$ 0.50
Bag of 25 Golden Tees	\$ 0.50	\$ 0.50	\$ 1.00
Bag of 60 Golden Tees	\$ 1.00	\$ 1.00	\$ 2.00
Paid YouTube Shot	\$ 0.25	\$ 0.25	\$ 0.50
Money Shot	\$ 0.00	\$ 0.50	\$ 0.50
Money Shot 6 Play	\$ 0.00	\$ 2.50	\$ 2.50

\* 100% of entry fee paid as prize to players in marked contests.  
Entry fee for Events Mode changes over time.

Back

(USA) Golden Tee PGA Tour 50.05.00 T-Game ID 14-28238

## RESET LEADERBOARDS & RECORDS

Use this menu to reset various machine-specific Leaderboards.

### Reset Leaderboards

This leaderboard is displayed after every hole during a casual game. Use this setting to clear the current play data. This option resets all Local Leaderboards.

### Reset Course Records

Course records, such as best score on each course, are displayed on various screens during a game and in the attract mode and replayed in the game's attract mode. Use this setting to clear all course records and game highlights.



### Reset RTR Character Records

Allows operators to reset all Real Time Rivals Character records

### Reset All

Use this setting to clear all Leaderboards, local records and game highlights. This process could take several minutes to run so please be patient.

## ITNET SETTINGS

This section details various ITNet settings, such as game registration and connection settings with ITNet.

### Change Location/Register Game

This section lets you update the information for the location that your game is currently in and send it to ITNet.

#### Location Information

The current location where the game is registered

If your machine is unregistered, the screen will display **Register Game**. If your machine is already registered, the screen will display **Change Location**.

#### Communication Settings

This section lets you select and adjust various communication options including Wi-Fi.

#### Connection Tests

This section tests your communication connections for integrity and reliability.

#### Back

Select this to return to the **Main Menu**.



**Note:** These sections require an ITNet Operator ID Card and a working connection to ITNet to activate.

## COMMUNICATION SETTINGS

This screen shows the type of communication device that is currently in use, and its status and signal strength. In most cases, the wireless modem will be in use and active. If your machine is in a location with low signal strength, check the Troubleshooting section of the manual for ways to help boost your signal.

### Configure Ethernet Settings

If your machine is in a location with low signal strength, and none of the suggestions on boosting your signal help, you may need to connect to ITNet using a broadband connection through Ethernet.

#### Back

Select this to return to the **ITNet Settings** menu.



## CONFIGURE ETHERNET SETTINGS

Depending on your system setup, you may need to manually set specific settings for Ethernet to work. Use this menu to enter these settings.

### Enable DHCP

Set this to Yes if your service provider or your router hardware has DHCP enabled. DHCP automatically sets the IP, Gateway and Net Mask.

If you edit the IP below to anything other than 0.0.0.0, it automatically changes Enable DHCP to No.

### If No DHCP, Static IP

Set this to the IP that your service provider issued, or an IP from your router's subnet that is not already being used.

If the IP is set to 0.0.0.0, it automatically changes Enable DHCP to Yes.

### Gateway

Set this to the Gateway that your service provider issued, or the IP address of your router. Example: 192.168.1.1

### Net Mask

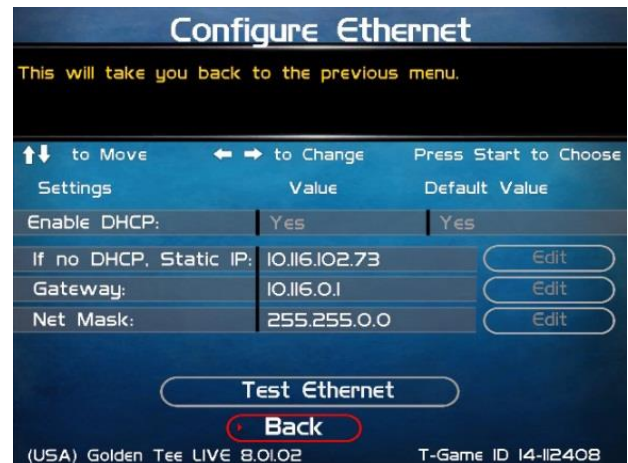
Set this to the Net Mask that your service provider issued, or if you are using a router it is typically 255.255.255.0. Example: 255.255.255.0

### Test Ethernet

Selecting this will initiate a network connection using your entered network settings for DHCP or Static IP, Gateway and Net Mask. If the connection succeeds, a latency time check is also performed. Results are displayed at the end of the tests. It is a good idea to perform this test anytime you make changes to any of these settings to make sure everything works.

#### Back

Select this to return to the **Communication Settings** menu.



## CONFIGURE WI-FI SETTINGS

### Connection Tests

Use this section to test the connection to ITNet.

#### Check Latency Time

This test will measure the time it takes for your game to communicate with ITNet. If successful, the delay time in seconds will be displayed.

#### Force Call to ITNet

This test will initiate a connection with the ITNet system and give a result status.

#### Back

Select this to return to the **ITNet Settings** menu.





## COLLECTIONS GUIDE

Golden Tee PGA TOUR Edition is a revolutionary product that requires some special handling when making a collection. Follow these steps every time you make a collection to make sure your profits and payments are managed properly.

### Step 1: Collect your Cash Box

Open the coin vault and collect the cash and bills. Count it carefully and note the total.

### Step 2: Review the Collection Screen

Remember that there are various fees and charges associated with some Golden Tee PGA TOUR Edition features, so it is important to compare the total cash you collect to the Collection Screen in the game. Open the outer door of the cash vault and press the System Setup button to enter the System Setup Menus. Select **Collections and Earnings**, and then **Do Collection**. The machine will attempt to contact ITNet for complete and updated data.

If an error occurs, back out of the collection menus and try the process again. If the machine is unable to contact ITNet, an estimated collection will be presented. This estimate will be close to accurate, and should allow you to complete the collection. Any discrepancies will be reconciled once the machine is able to connect properly.

This process takes you to the main collection screen. You should familiarize yourself with this screen, and how the information is displayed. These figures will help you determine how much to give to the location.

Note the date range and number of days in operation. If used properly, these fields should match with your collection dates. They are also important for calculating some of the various monthly fees.

**Do Collection**

This will reset the days of operation at this location to 0.

↑↓ to Move   ← → to Change   Press Start to Choose

Collection From: 03/03/2005 at 17:23:23 to 03/14/2005 at 14:17:26

Actual Collection

Days In Operation:	12	Reset
Total Income:	\$ 395.75	More Details
Total Fees:	\$ 108.35	More Details
Balance:	\$ 287.40	
Operator Portion of Balance:	\$ 183.90	
Operator Owes Location:	\$ 103.50	

Back

Do Collection & Exit

(USA) Golden Tee Live 10013      D-Game ID 14-12835

Review the **Total Income** and **Total Fees** columns to see how much money your machine made for this time period, and how much is owed for various fees for this time period.

**Total Income** includes income from Cash, Player Wallet, Credit Card purchases, and various Promotional or Gift Cards. Note that games paid by anything other than cash will NOT be in your cashbox, and will instead be credited to you on your ITNet statement. **THIS MEANS THAT YOUR CASHBOX WILL NOT MATCH YOUR TOTAL INCOME.** Select **More Details** to view a breakdown of cash, player account, gift card and credit card income.

To verify the Operator and Location portions, first divide Total Income by the correct split percentage to get the operator and location portions of income. Then divide Total Fees by its split percentage to get both portions of the fees. Then subtract each fee portion from the income portion to get the final operator and location portions.

**Total Fees** include ITNet fees, money for the Prize Fund, Communication fees, Credit Card fees, Software Update fees and Hardware Upgrade fees. Note that Software Update Fees and Hardware Update Fees are included for your convenience, to help you cover the costs of owning and operating your equipment. These two line items are NOT included on your monthly ITNet statement, but give you a great opportunity to split some of these costs with the location. The **Balance** column displays the Total Income minus the Total Fees, giving you a realistic total of income for this time period.

### Step 3: Pay the Location

Operator Portion of Balance is the amount of the collection that you keep. Operator Owes Location is the amount of the collection that you pay your location. These amounts are determined by the split percentages set in the Collection Settings menus. In some extreme cases, there may not be enough money in the cash box to cover the location portion. **It is highly recommended that you do your best to pay the location at the time of the collection, as any missing funds will be reconciled during the monthly ITNet billing.**

### Step 4: Reset the Collection Screen

It is highly recommended that you reset these audit screens after every collection. When you have finished reviewing the information, highlight **Do Collection and Exit** and press Start. This will set all of the fields in the **Do Collection** screen to zero. Be sure to empty your cash box at the same time, so these screens will match the money at your next collection.

## INCOME SPLIT GUIDE

Golden Tee PGA TOUR Edition is a revolutionary product that offers a variety of ways to pay for game play, including credit cards, player wallet and gift cards. There are also some fees associated with the operation of Golden Tee PGA TOUR Edition. The operator/location split on many of these income and fee settings can be individually adjusted, allowing you to fine tune your costs and maximize your profits.

To access the Collection Settings menus, open the outer door of the cash vault and press the System Setup button to enter the System Setup Menus. Select **General Settings**, then **Operator Adjustables**, then **Collection Settings**. The four available categories are: Hardware Update Fee, Income Splits, Fee Splits, and Tax Settings.

### Set Hardware Update Fee

This menu allows you to adjust the Hardware Update Fee. This fee is included for your convenience, as a method to have the location pay for part of your equipment. The default value is \$0.00 per week. Use this menu to adjust this value up or down. The weekly amount will be calculated on a per day basis, and added in to the **Total Fees** field on the **Do Collection** screen. Note that the Hardware Update Fee is included for your convenience; it is not an actual fee and is NOT included on your monthly ITNet statement.

### Operator/Location Income Splits

Use this menu to fine-tune your splits for income generated from Cash, Player Wallet, Credit Card, ITNet Money Card, and Operator Money Card payments. Since there may be times when you have to pay the location before you actually have the cash in hand, you may want to adjust the split in your favor to cover the waiting period. The default settings are displayed on the accompanying screen.

Operator/Location Income Splits		
This will take you back to the Collection Settings menu.		
↑↓ to Move	← → to Change	Press Start to Choose
	Operator %	Location %
Cash	60%	40%
Player Wallet	70%	30%
Credit Card	70%	30%
ITNET Money Card	70%	30%
Operator Money Card	100%	0%
Reset Values		
Back		
(USA) Golden Tee LIVE 11.04.02 T-Game ID 14-000075		

### Operator/Location Fee Splits

Use this menu to determine how you wish to split the various fees associated with Golden Tee PGA TOUR Edition, including ITNet Fees, Prize Fund Fees, Credit Card Fees, Communication Fees, Software Update Fees and Hardware Update Fees. The location is benefiting from your game by increasing food and beverage sales and creating loyal patrons. Setting some of these splits in your favor will help you to cover your costs in a fair and equitable manner. The default settings are displayed on the accompanying screen.

Operator/Location Fee Splits		
This allows you to adjust the operator/location splits for ITNet fees.		
↑↓ to Move	← → to Change	Press Start to Choose
	Operator %	Location %
ITNet Fees	50%	50%
Prize Fund Fees	50%	50%
Credit Card Fees	50%	50%
Communication Fees	50%	50%
Software Update Fees	50%	50%
Hardware Update Fees	50%	50%
Back		
(USA) Golden Tee Live 1.00.13 D-Game ID 14-112835		

### Tax Settings

Many states require special taxes or license fees that affect your bottom line. Use this menu to account for these costs in your collection.

In these menus, you can set the Tax Rate percentage, the Tax Type, meaning what part of the collection is taxed and who pays for these taxes, and the Tax Split for how to share these fees with your location.

Incredible Technologies hopes that you will take advantage of these menus to maximize your earnings potential.

## PLAYER WALLET GUIDE

Golden Tee PGA TOUR Edition offers a revolutionary Play for Prizes contest format that allows players from all over the world to compete for cash with every game they play. In most cases, prizes are awarded immediately following the completion of each contest, via a credit to special ITNet Player Wallet.

Player Wallets are available to the individual players directly through a Golden Tee PGA TOUR Edition machine. That means that the players can easily use their winnings to play more games of Golden Tee PGA TOUR Edition. Now, instead of getting a check in the mail and spending the winnings away from the game or location, the majority of players are using their winnings to play more Golden Tee PGA TOUR Edition games, thus putting their winnings right back into the machine.

This is a huge benefit to both the location and operator, because it keeps people in their seats, eating and drinking and playing Golden Tee. Operators can look at this reinvestment as found money, and a brand new source of revenue.

When a player pays for his game using his Player Wallet, he is not putting cash directly into the coin box. This means that the game revenue in a normal collection cycle will typically exceed the actual cash in the game. Therefore, it is very important to familiarize yourself with the Golden Tee PGA TOUR Edition collection menus and procedures, and your monthly ITNet billing statement.

When the player uses this Player Wallet money to play more Golden Tee, ITNet credits the full amount to the appropriate operator. These credits will appear on your regular monthly ITNet statement, and will mean a lower ITNet bill, or sometimes even a credit to your bank account!

You are encouraged to pay the location portion in full at each collection, to avoid additional accounting on your part. While there might be a delay before you get your money back from ITNet, it will simplify the process immensely if you can manage the location up front. The operator/location split percentage has been set in your favor at 70/30 for Player Wallet income, since you must wait for your portion. Use this as a selling tool to adjust the collection in your favor.

The Collection Menu on Golden Tee PGA TOUR Edition details the various income sources for your review. You are encouraged to spend some time with these screens so you understand where your revenue is being generated. You should also log in regularly to your Operator Services account on [itsgames.com](http://itsgames.com), to check on the performance of your equipment and check to see if the cash in the cash box will be enough to cover the split with your location.

- ◆ Skill based Play for Prizes adds an additional revenue source with huge potential
- ◆ Winners are encouraged to reinvest their winnings back to Golden Tee PGA TOUR Edition
- ◆ Entry Fees and Player Wallet Play must be collected and distributed by ITNet first
- ◆ The Player Wallet default split percentage is factory set to the operator's advantage
- ◆ Use the Collection Screen to set aside the various game fees, including Prize Pool money, and determine the location split
- ◆ Pay the location portion at the time of collection if at all possible
- ◆ Each month ITNet will issue a credit to your bill for Player Wallet activity on your machines.
- ◆ In some cases this additional revenue and resulting credit will cover or surpass your fees, in which case ITNet will credit your bank account.

# GOLDEN TEE PGA TOUR EDITION REVENUE GUIDE

**Revenue Types** - With GT PGA TOUR Edition, cash is now not your only source of income. You can't just count up the cash, deduct the fees and split the rest. Players can now play games with cash as well as 5 other revenue types. The different types of revenue are:

- Cash
- Player Wallet
- Credit Cards
- IT Gift cards
- Operator gift cards
- Operator free cash

**Cash** – Is just that; coin and currency. This is the only revenue that will appear on your hard meter, since it is counting physical pulses from the coin mechanisms and bill validator.

**Player Wallet** – This is the revenue earned when a player plays games with their “Play for Prizes” winnings. Players can still request a check for their winnings on the IT website, but most are rolling it right back into your game.

**Credit Cards** – This is revenue earned when a player pays by credit or debit card. GT PGA TOUR Edition currently accepts Visa and MasterCard.

**IT Gift Cards** – This is revenue earned when a player swipes his gift card to pay for a game. IT Gift cards are purchased through us directly and shipped either to the purchaser or the recipient of the gift. This is similar to a Wal-Mart or Best Buy gift card.

**Operator gift cards** – These are cards you can purchase for the cost of the plastic. You request whatever denomination you want. We will print the cards with your logo and artwork. You can give these out for promotions or refunds. Players will only be able to use them on machines registered to your account.

**Operator free cash** – This is the dollar value of games played using Operator free cash. These are credits you can put on your game for free play. This is intended for use if you want to test a game or set up a certain dollar amount of free play for promotional purposes, such as an open house.

## ACCOUNTING FOR THE VARIOUS REVENUE TYPES

**Cash** – The GT PGA TOUR Edition machines are factory set to give you 60% and the location 40% of the cash.

**Player account, Credit card and IT Gift revenue** - Since this is revenue to you, but you do not have the cash in hand at the point of collection, you will get your money on your ITNet billing statement as a credit in a column titled “Due from IT.” You'll need to pay your location on collection day and wait to receive this revenue until your next statement, so you are basically fronting this revenue type to your locations. Because of this, the machines are factory set to give you 70% of this revenue and the location 30%. That extra 10% of the cash split that you're taking will help cover the 30% you're fronting.

**Operator gift cards and Operator free cash** – Operator gift cards and Operator free cash are a way to promote your GT PGA TOUR Edition without splitting this “Revenue” with your locations. This is accounted like non-revenue or free play. This revenue is set to give you 100% and the location 0%. Please note that any fees incurred from this revenue still apply.

Please note all the revenue and fee settings can be changed to whatever split percentage you want, for each type of revenue source.



# GOLDEN TEE PGA TOUR EDITION FEES

**Fee Types** – The 6 different fee types are as follows:

- ITNet Fees
- Credit Card fees
- Communication fees
- Prize Pool/Fund
- Software Update fees (operator benefit)
- Hardware Update fees (operator benefit)

**ITNet portion** – This is what is paid to IT for administering a PGA TOUR Edition game or the purchase of virtual balls and equipment. For every PGA TOUR Edition game the ITNet portion is \$0.35. IT is also paid half of the cost when a player purchases premium balls, Golden Tees or clubs, or paid YouTube™ shots. The player cost schedule below breaks out these fees.

Play Choice	Total to Player	Operator Portion	ITNet Portion	Prize Fund
Daily Contest	\$5.00	\$3.65	\$0.35	\$1.00
18-Hole PGA TOUR Edition	\$4.00	\$3.65	\$0.35	0
18-Hole Stats Play	\$4.00	\$3.65	\$0.35	0
18-Hole for Prizes	\$5.00	\$3.65	\$0.35	\$1.00
Closest to the Pin PGA TOUR	\$2.00	\$0.90	\$0.10	\$1.00
Closest to the Pin Online	\$1.00	\$0.90	\$0.10	0
Closest to the Pin Casual	\$1.00	\$0.90	\$0.10	0
Casual (18 hole)	\$4.00	\$3.65	\$0.35	0
Mulligan	\$0.25	\$0.25	0	0
Hole-N-Win Par 3	\$0.50	0	\$0.50	IT Funded
Hole-N-Win Par 4	\$1.00	0	\$1.00	IT Funded
Virtual Golf Clubs	\$2.00	\$1.00	\$1.00	0
Virtual Golf Balls	\$0.50	\$0.25	\$0.25	0
Bag of 10 Golden Tees	\$0.50	\$0.25	\$0.25	0
Bag of 25 Golden Tees	\$1.00	\$0.50	\$0.50	0
Bag of 60 Golden Tees	\$2.00	\$1.00	\$1.00	0
Paid YouTube™ Shots	\$0.50	\$0.25	\$0.25	0
Money Shot	\$1.00	\$0.40	\$0.10	\$0.50
Money Shot 6 Play	\$5.00	\$2.00	\$0.50	\$2.50
Real Time Rival	\$4.00	\$3.65	\$0.35	0
Events Mode	\$5.00	\$3.65	\$0.35	0

**Credit Card fees** – When a player opts to pay by a credit card, there will be a merchant fee associated with this charge. The fee comes to just under 2% plus a per-transaction fee. When this transaction fee is rolled back in with the 2% fee, your actual percentage rate ends up being around 7.2%. This may look high, but for a micro transaction this is low.

For example a normal purchase of \$100.00 is made on a credit card. Add the 2% plus a \$0.30 per transaction fee. It comes to \$2.30 or 2.3%. Do this same transaction with a \$4.00 purchase. You would add the 2% (\$0.08) to the per-transaction fee of \$0.30 and you get \$0.38. This works out to 9.5%.

**Communication fees** – There is a communication fee for the use of the Sprint wireless service on the game. The Sprint charge is \$0.50 per day or \$15 per month. It does not matter if your game uses 500 or 5000 minutes per month, the rate stays the same. Please note that if you have Ethernet capability at your location, simply plug it in and your modem will automatically be disabled. You will also no longer be billed for communication fees.

**Prize Pool/Fund**– When players enter a PGA TOUR Edition game, they are asked if they want to play for prizes. This will not occur if your game is in a state that does not allow PGA TOUR Edition for Prize Play or if you disable PGA TOUR Edition for Prize Play on your machine. If the player opts to play for prizes (money), they are asked to pay an additional dollar. The prize fund money can be accounted as pass-thru money. This fee will appear on your ITNet statement, since IT collects these entry dollars from you, and disperses them to the winners through their player wallet.

**Software Update fees** – Down the road when you purchase new courses for your PGA TOUR Edition game this will give you the opportunity to split the cost of your new courses with your location. It is handled much like the Hardware Update fee, described next.

**Hardware Update fee** – This Hardware Update fee is for you and you alone. You will NEVER BE BILLED for this fee. Operators have been asking for a place where they could recoup extra costs (should they so desire) from their locations. The default weekly fee is set to \$0.00. If you were to change the default setting to \$29 per week on your machine, you will have recouped half the cost of your PGA TOUR Edition game from your location in 4 years. Many operators use this feature for other purposes. It can be used in certain locations where a weekly minimum is required. It can also be used for a weekly contest participation fee. The dollar amount of this fee can be changed to whatever dollar amount you want. The percentage split may also be adjusted.

## ACCOUNTING FOR FEES

All the fees above are factory set to split 50/50. The collection will take the different revenue types and calculate the different percentage splits, then take the different fees and calculate their split percentages. The fees will be deducted from the revenue and a dollar value is given to you and to your location. These values are shown on the collection screens in System Setup mode.

## COLLECTIONS

**GT PGA TOUR Edition Collection Screen** – The first thing you will see is the collection From ... to ... dates. Just below that you will either see “Estimated Collection” or “Actual Collection.” If you see “Estimated Collection” there was a problem getting a connection to our servers. We strongly suggest you back out without collecting and then go right back in to try to connect again. Nine times out of ten you should get an actual reading.

In the gray boxes, you will see the line item “days of operation.” This is the number of days since your last collection screen was cleared. You will see the total income, total fees, balance, operator portion of balance and operator owes location numbers. Since cash is no longer your only source of revenue, it is very important to view the details of the total income. To get these numbers, simply move the trackball up to the “More Details” blue box located directly to the right of the total income dollar value. Click your start button and you will be into the revenue breakdown page.

This screen shows a line item for each type of revenue source. This is where you can compare your cash on screen to your cash in hand. You can then go back to the main collection screen and do the same for your total fees. When you are done viewing all your numbers, click on the “Do Collection and Exit” button. The game will then send the collection data to your secure operator services web page for viewing at your office.

The next page is a sample GT PGA TOUR Edition collection sheet, showing the different revenue and income. This also shows the default percentages of the various split settings. You may want to take this form with you to your collections until you are comfortable with the system.



## Collection Worksheet

Location \_\_\_\_\_ CID \_\_\_\_\_

From \_\_\_\_/\_\_\_\_/\_\_\_\_ to \_\_\_\_/\_\_\_\_/\_\_\_\_

Collector \_\_\_\_\_

**Total Income**     \$ \_\_\_\_\_

Cash \_\_\_\_\_ (Default 60% Operator/40% Location)

Player Wallet (Due from IT) \_\_\_\_\_ (Default 70%/30%)

IT Gift Cards \_\_\_\_\_ (Default 70%/30%)

Credit Cards \_\_\_\_\_ (Default 70%/30%)

Operator Free Cash \_\_\_\_\_ (Default 100%/0%)

Operator Gift Cards \_\_\_\_\_ (Default 100%/0%)

**Total Fees**     \$ \_\_\_\_\_

ITNet Fees \_\_\_\_\_ (\$0.35 p/ PGA TOUR Edition game; 50% of balls & clubs, Hole-N-Win, CTP PGA TOUR Edition, paid YouTube)

Prize Fund \_\_\_\_\_ (\$1.00/\$0.50 for Money Shot)

Communication Fee \_\_\_\_\_ (\$0.50 per day; or \$15 per month)

Hardware Update Fee \_\_\_\_\_ (adjustable by the operator; not charged by IT)

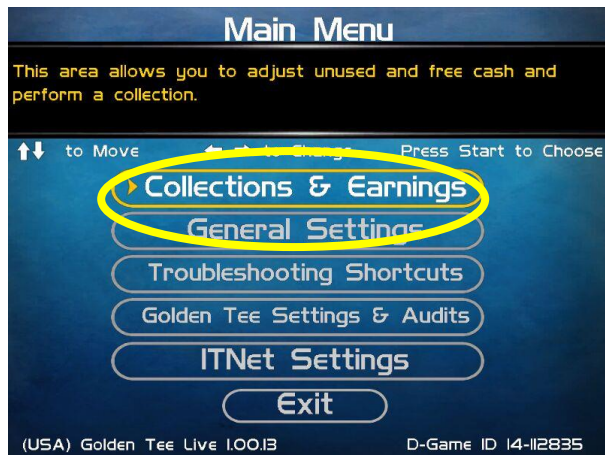
Credit Card Fees \_\_\_\_\_ (7.2%)

Software Update Fees \_\_\_\_\_ (will activate with new courses)

**Net to Split**     \$ \_\_\_\_\_ / \_\_\_\_\_  
    Operator portion     /     Location Portion

## GT PGA TOUR EDITION COLLECTION PROCEDURE

Follow this step-by-step visual guide to aid in proper collections on your machines. Refer to the Collections Guide in your manual for more helpful information.

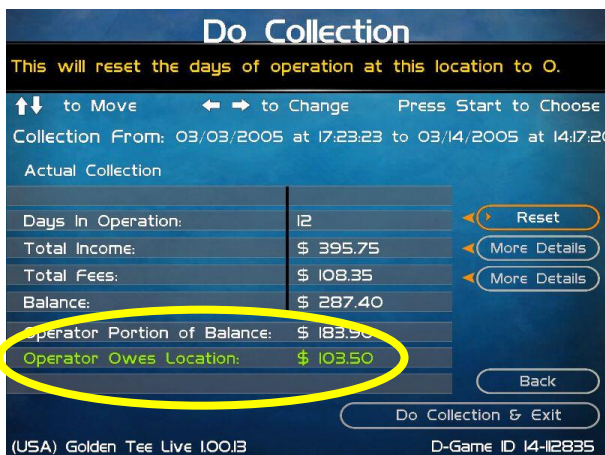


Press the System Setup button inside the coin door to access the System menus.

Use the trackball to highlight **Collections & Earnings** and press the Start button.



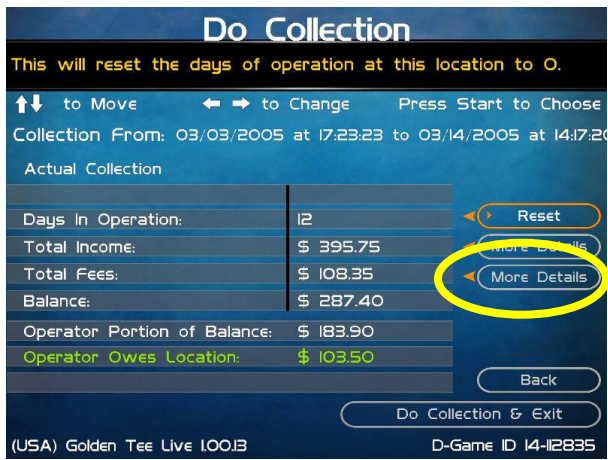
From the Collections & Earnings Menu, highlight **Do Collection** and press the Start Button. The game will connect with ITNet and gather the most current financial data.



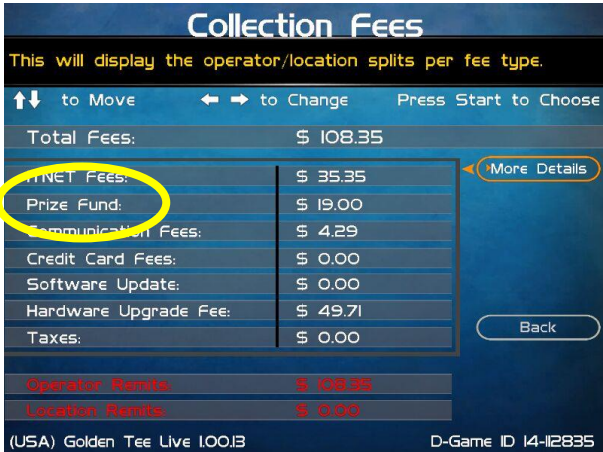
**Note:** Make sure that the top of the screen reads Actual Collection. If it reads Estimated Collection, the collection will not be accurate. It is possible the game is offline. In general, if the operator exits without recording and re-enters, the screen will then read Actual Collection.

Look at the dollar amount beside Operator Owes Location. This is the location portion that should be paid at the time of the collection. Due to the various alternative payment options this number will NOT match the cash in the coinbox. However, it is a good idea to pay the location its share at the time of collection. Any money owed to the operator will be credited on the monthly ITNet statement.





Once the location is paid, your collection is effectively complete. However, if you wish to view a more detailed breakdown of the various income and fee categories, use the trackball to highlight More Details and press the Start button.



The Collection Fees menu displays the various fees associated with the current collection.



**Note:** The Hardware Upgrade Fee is included as a means for operators to have the location help pay for the cost of the game, and **IT does not collect or keep any portion of this fee.** This fee is completely adjustable and can be set to zero if desired.

Collection Fees	
This will display the operator/location splits per fee type.	
↑↓ to Move   ← → to Change   Press Start to Choose	
Total Fees:	\$ 108.35
ITNET Fees:	\$ 35.35
Prize Fund:	\$ 19.00
Communication Fees:	\$ 4.29
Credit Card Fees:	\$ 0.00
Software Update:	\$ 0.00
Hardware Upgrade Fee:	\$ 49.71
Taxes:	\$ 0.00
Back	
Operator Remits:	\$ 108.35
Location Remits:	\$ 0.00
(USA) Golden Tee Live 10013      D-Game ID 14-12835	

If you wish to view the operator and location portions of these various fee categories, highlight More Details and press the Start button.

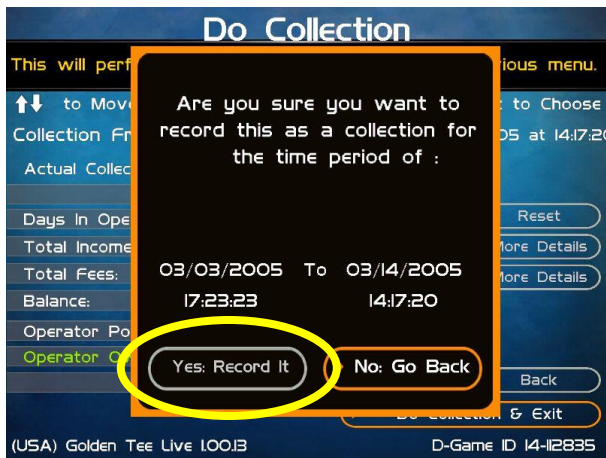
Collection Fee Details			
This will take you back to the previous menu.			
	Operator Portion	Location Portion	Total
ITNET Fees:	\$ 17.67	\$ 17.68	\$ 35.35
Prize Fund:	\$ 9.50	\$ 9.50	\$ 19.00
Communications Fee:	\$ 2.15	\$ 2.14	\$ 4.29
Credit Card Fees:	\$ 0.00	\$ 0.00	\$ 0.00
Software Update Fee:	\$ 0.00	\$ 0.00	\$ 0.00
Hardware Upgrade Fee:	\$ 24.86	\$ 24.85	\$ 49.71
Taxes:	\$ 0.00	\$ 0.00	\$ 0.00
TOTALS:	\$ 54.18	\$ 54.17	\$ 108.35
Operator Remits	\$ 108.35	To Incredible Technologies	
Operator Remits	\$ 0.00	To Tax Authorities	
Location Remits	\$ 0.00	To Tax Authorities	
<div>(USA) Golden Tee Live 10013      <div>Back</div>      D-Game ID 14-12835</div>			

This screen further details the operator and location portions for the various fees, based on the adjustable split settings. See the GT PGA TOUR Edition manual for more information on how to set up your splits.

To exit this menu, highlight Back and press the Start button.

Do Collection	
This will reset the days of operation at this location to 0.	
↑↓ to Move   ← → to Change   Press Start to Choose	
Collection From: 03/03/2005 at 17:23:23 to 03/14/2005 at 14:17:20	
Actual Collection	
Days In Operation:	12
Total Income:	\$ 395.75
Total Fees:	\$ 108.35
Balance:	\$ 287.40
Operator Portion of Balance:	\$ 183.90
Operator Owes Location:	\$ 103.50
Reset	
More Details	
More Details	
Do Collection & Exit	
(USA) Golden Tee Live 10013      D-Game ID 14-12835	

To complete your collection, get back to the Do Collection menu. Once there, use the trackball to highlight **Do Collection & Exit**, and press the Start button.



Check the dates in the window to make sure they match your time period. To complete the collection, highlight Yes: Record It and press the Start button.

This will reset all the income and fees to zero, so your next collection will be accurate for that time period.



Continue to select Back on the various screens until you get to the Main Menu. Highlight Exit and press the Start button to exit System Setup mode and return to the game.

## MENU NAVIGATION SHORTCUTS

### Force a Call

- Push the red system setup button inside the coin door
- Select the **ITNet Settings** menu
- Select the **Connection Tests** menu
- Select **Force Call**
- Exit all the way out when complete

### Change Collection Settings

- Push the red System Setup button inside the coin door
- Select **General Settings** menu
- Select **Operator Adjustables** menu
- Select **Collection Settings** menu
- Select the menu that you want changed

### Disable Credit Cards

- Push the red system setup button inside the coin door
- Select **General Settings**
- Select **Operator Adjustables**
- Select **General Adjustments**
- Go to the **Accept Credit Card** line and change to a "Yes" or "No"

### Add Operator Free Cash

- Push the red System Setup button inside the coin door
- Select **Collection and Earnings**
- Select **Add Free Cash**
- Move the trackball to select the desired dollar amount